

JOHN DEERE TRACTORS, VENTRAC, FARM EQUIPMENT, NEARLY ALL ONE-OWNER WITH VERY LITTLE USE
John Deere 6150R, full cab, MFWD, direct drive 24 spd, 2014, pre def, 42 inch rubber with axel mount duals, 4 remotes, 10 suitcase weights, 660 HRS, SN: 1RW6150RVET014144; John Deere 5083E full cab tractor with 553, MFWD, loader bucket and forks, 540 PTO, 2 remotes, 1164 HRS, 12 spd with left hand reverser, SN: LV5083E261112; Bush Hog 12815 batwing brush hog, 15', 1000 PTO, aircraft tires; 2011 Dodge Ram 2500 HD Laramie, Cummins turbo diesel, crew cab, 6' bed, gooseneck hitch, 90,153 mi, deleted and tuned, built trans; 2009 Featherlight, mod 9608, 2-horse trailer with tack room, 6.7 ft X 15 ft, 3500 lb axels; Kubota RTV 900, 4x4, diesel, 1340 hrs., full cab, elec dump, SN: A5503; Ventrac 4500Z with 82" contour deck, Kubota gas, 32 hp, all-wheel drive articulating tractor, approx. 1600 hrs, rear hyd and 3pt, hydrostatic; 54" Ventrac ball field groomer; Vermeer 1250 pull-type chipper, auto feed 2, diesel rebuilt engine; H&S 235 manure spreader, slop gate, single beater, poly floor; JD 3 pt 390 flail mower, 8'; JD QT hyd bale grabber; Hardi N105 3 pt sprayer, 12' boom, hose reel and wand; Parma arena groomer mod: AG615, 7'; Land Pride pd 35 post hold drill, 12"; EZ Haul Nursery wagon, 6'x8.5'; Boss smart shield 8' skid steer triple edge box snowplow; Frontier LR2184, 3 pt York rake, 8'; two flatbed hay wagons; Quality trailer 7' X 12' landscape trailer

WOOD SHOP EQUIPMENT
Shop Fox W1863 15" planer, like new; Jet 3 hp dust collector, remote control; Ridgid spindle sander; Dewalt 12" planer; Delta 18" belt sander; Kraig table router; Jet 10" tilting arbor saw, 6.6' table with power feeder attachment; Jet 6" long bed jointer, mod JJ6CSX; Festool KS120EB miter saw with long bench; wood river mortiser; Dewalt scroll saw; Rikon 12" band saw; Jet drill press; brand new Simpson 4200 psi pressure washer; wood roller stands; OEM tools 4' portable fan; new kitchen cabinet fronts for a full kitchen; Champion upright mod VRV5-6, 5 hp, single phase; bar clamps; tool cabinets; circular saw; small power tools; assorted hardware; 20 plus bags of mag flakes for riding arena; 30 gal pull-type sprayer; 180 wood pallets; electric Wareing pro popcorn maker; work bench; platform scale; other power tools and misc; assorted lumber

ONLINE TERMS
Approved check or Wire Transfer accepted.7% buyer's premium on all sales. Information is believed to be accurate but not guaranteed. Multi par auction process may be used.

ONSITE TERMS
Driver's license or State ID required to register for bidder number. Cash, Check, Debit Card, Visa, or Master Card accepted. 4% buyer's premium on all sales; 4% waived for cash or check when paid sale day. Information is believed to be accurate but not guaranteed. Multi Par auction process may be used.



RUSSELL T. (RUSTY) KIKO, JR.
AUCTIONEER/REALTOR
330.495.0923
rustykiko@kikocompany.com



RUDY W. KIKO
AUCTIONEER/REALTOR
330.540.2416
rudykiko@kikocompany.com



RYAN M. KIKO
AUCTIONEER/REALTOR
330.831.8565
ryankiko@kikocompany.com



STEPHANIE L. KANDEL
REALTOR
330.705.9880
skandel@kikocompany.com



Information is believed to be accurate but not guaranteed.
KIKO Auctioneers



ABSOLUTE AUCTION
WEDNESDAY, JUNE 25, 2025, 4:00 PM
REAL ESTATE SELLS AT 5:00 PM
FOLLOWED BY EQUIPMENT AT 6:00 PM



REAL ESTATE



HIS WAY FARM LLC
128-Acre
Hideaway Farm

36328 EAGLETON RD.,
LISBON, OH 44432

www.kikoauctions.com | 800.533.5456

LIVE ONSITE WITH ONLINE BIDDING AVAILABLE ON REAL ESTATE & SOME LARGER EQUIPMENT

AUCTION HIGHLIGHTS

- Brick Home With Finished Walk-Out Basement
- 100 X 204 Indoor Horse Arena
- Several Quality Outbuildings
- Tillable Farmland

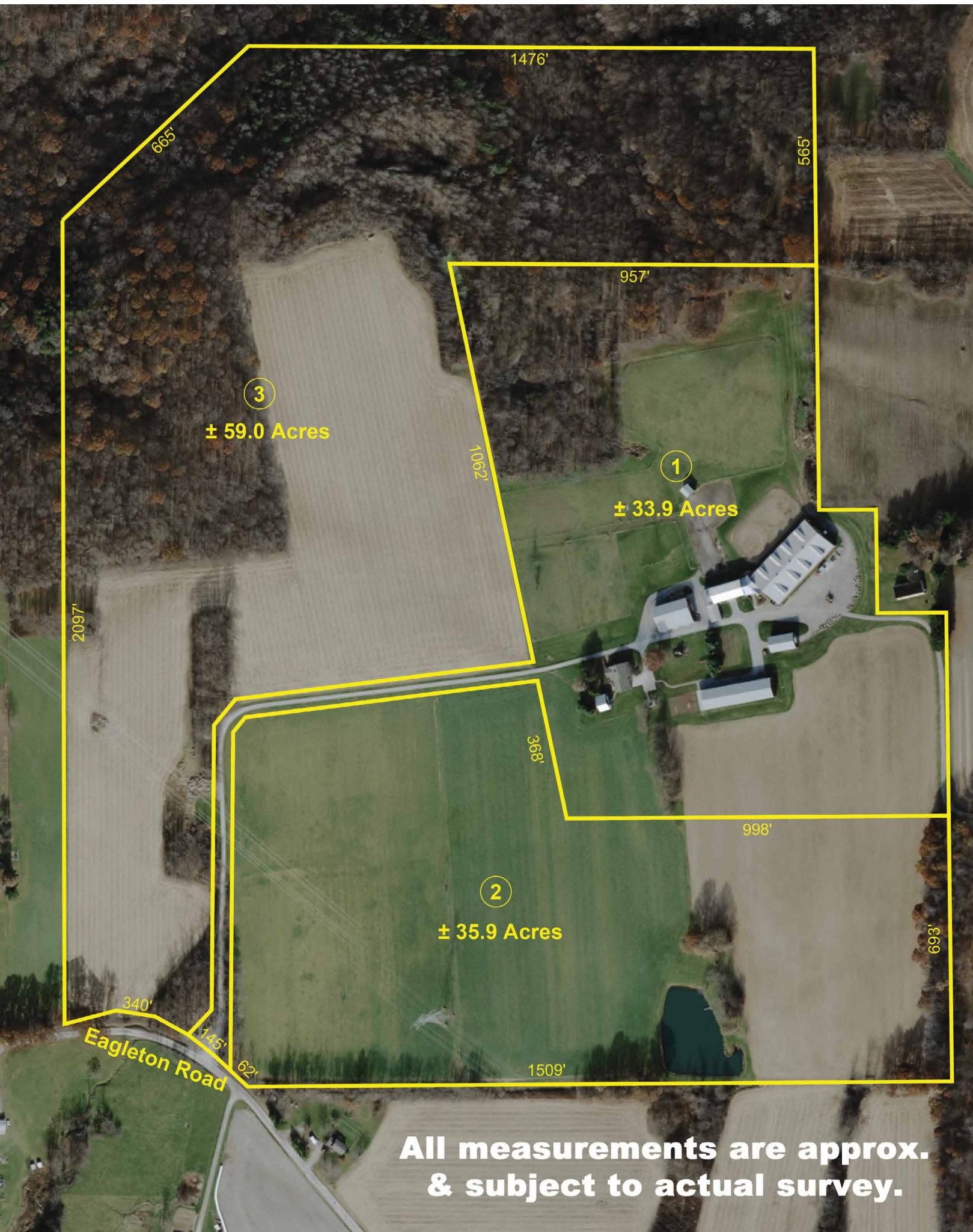
Also Selling

- John Deere Tractors And Equipment
- Horse Trailer
- Dodge Truck
- Wood Tools



Scan for auction details, including directions.

Absolute Auction.
All sells to the highest bidders on location.



REAL ESTATE DIVIDED AS FOLLOWS

PARCEL 1:

33.9 acres with brick home and outstanding outbuildings. Brick 2-level home built in 1980. Main level features beautiful Schrock kitchen, cherry floors, built in desk and cabinets plus walk in pantry. Open concept dining room and living room. 3 bedrooms and full bath plus master suite with full bath and balcony. Lower walk-out level features kitchenette, office, family room with brick fireplace, 2 bedrooms and full bath. Attached oversized two-car garage with laundry, heated floor, & AC. FA oil heat, central air plus outdoor wood burner. New windows throughout. Large concrete apron and brick patio. 25 X 25 storage building with overhead storage, concrete floor, (2) dog run-ins and roll up door. Lester 100 X 204 indoor arena built in 2012 with dormer windows, water and PA system (standards & poles to transfer). Attached heated laundry room with commercial washer & dryer, utility sink plus, a large wash rack. Beautiful furnished viewing area and lounge complete with applanced oak kitchen and TV, counter bar, tile flooring, full bath, loft bedroom, balcony and triple windows overlooking the arena. 42 X 90 concrete block, clear span bank barn with plank floors & sliding doors. Lower level features (8) 11 X 11 matted horse stalls, concrete aisles, curtains, 2 large tacking areas, plus 44 X 28 heated finished tack room with bath, sink, & 8' exterior door. Attached heated, insulated, 24 X 40 wood shop that is plumbed with airlines. Lower area storage and workshop with overhead door, concrete floor, steel ceiling. 64 X 40 K building built in 2011. Concrete floor, 2 overhead doors, (2) man doors. 48 X 90 K Building built in 2017. Concrete floor, steel truss, sliding doors on both ends, clear span, rollup door with opener, plus 90 X 14 side addition with roll up and sliding doors. Also, divided K building built in 2015. Clear span 50 X 60 heated shop with channel drain, concrete floor, sink, double sliding doors, 220 electric. Attached 120 X 50 clear span with 2 overhead doors, large slider door plus 50 X 30 mezzanine with sliding door. Large, covered porch. (2) 10,000 gal cisterns, drilled well. 60KW Kohler backup generator. 100 X 200 outdoor sand arena, high tensile coated fenced paddocks and run in shed. Limestone driveways and swing set. Absolutely gorgeous setting!

PARCEL 2:

35.9 acres with very nice pond. Nearly all high and gently rolling tillable land.

PARCEL 3:

59 acres nearly half tillable farmland balance wooded with marketable timber, oak, maple, poplar. Great hunting and nature. Joins bike trail on NW corner.

NOTE

Loads of photos and video on web.

OPEN HOUSES

Saturday, June 14, 2:00-4:00 PM and Thursday, June 19, 4:00-6:00 PM or shown by appointment.

TERMS ON REAL ESTATE

10% down auction day, balance due at closing. A 10% buyer's premium will be added to the highest bid to establish the purchase price. Any desired inspections must be made prior to bidding. All information contained herein was derived from sources believed to be correct. Information is believed to be accurate but not guaranteed. Property to be offered as a Multi Par auction and sold whichever way it brings the most.

